

**产品承认书**  
**PRODUCT APPROVED SHEET**

客户名称  
CUSTOMER NAME: \_\_\_\_\_

产品名称  
PRODUCT NAME: \_\_\_\_\_ **功率电感 POWER INDUCTOR** \_\_\_\_\_

产品型号  
PRODUCT MODEL: \_\_\_\_\_ **NLPS** \_\_\_\_\_

客户料号  
CUSTOMER P/N: \_\_\_\_\_

送样日期  
SAMPLE DATE: \_\_\_\_\_

供 应 商  
SUPPLIER: \_\_\_\_\_ **南京南山半导体有限公司 NSCN SEMICONDUCTOR CO., LTD.** \_\_\_\_\_

※ 本公司承诺所销售产品的品质与所送样品一致, 并与附件所录参数相符。  
We promise our products conform to the sample furnished in quality, and match with the parameters in the attachment.

※ 若对产品的品质有特殊要求, 请与本公司销售工程师联系。  
In case of any special requirement on the quality, please feel free to contact our sales engineers.

※ 感谢您给予本公司承认的机会, 烦请将此表寄回本公司便于存档。  
Thank you for giving the opportunity for the sample approval, please send this form back to the company for archiving.

公司确认 COMPANY APPROVAL			客户确认 CUSTOMER APPROVAL		
编写 PREPARED	审核 CHECKED	批准 APPROVED	检验 VERIFIED	审核 CHECKED	批准 APPROVED
公司签章 CHOP			公司签章 CHOP		

联系方式:  
电话: 025-84712762 84712745 84710496  
传真: 025-84710486  
邮箱: tech@nscn.com.cn  
地址: 江苏省南京市洪武路 26 号天丰大厦 11 层  
邮编: 210005

## ■ NLPS 系列功率电感 NLPS Series SMD Power Inductors

### • 特征 FEATURES

- 超薄
- 屏蔽结构
- 适合于表面贴装, 适合于回流焊
- Low profile
- Magnetic shielded
- SMT type, suitable for reflow soldering



### • 应用 APPLICATIONS

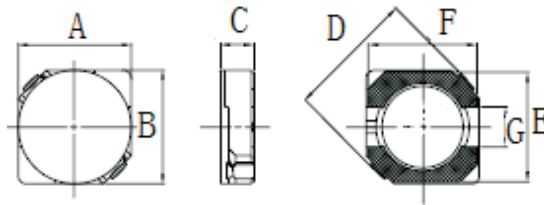
- 移动通信
- 笔记本电脑
- DC/DC 转换
- Portable communication equipment
- Notebook Computer
- DC/DC converters etc

### • 产品规格型号表示方法 HOW TO ORDER

NLP      S      5D28      —      150      M      T  
 ①      ②      ③           ④      ⑤      ⑥

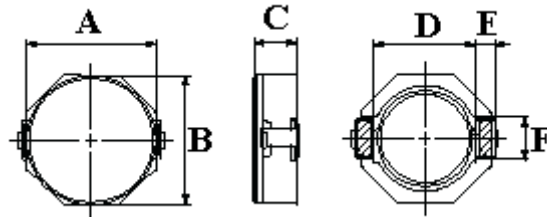
①	②	③		④		⑤		⑥	
产品代号 Product Code	类别代码 Class Code	规格尺寸(L×W×T) (mm) Dimensions		感量(μH) Inductance		误差 Tolerance		包装方式 Packaging Style	
功率电感 Power Inductor	S	3D18	3.8x3.8x1.8	150	15	M	±20%	T	卷带盘装 Tape&Reel
		4D18	4.7x4.7x1.8	101	100	N	±30%	B	散装 Bulk
		5D28	5.7x5.7x2.8	102	1000				
		6D38	6.7x6.7x3.8						
		8D43	8.0x8.0x4.3						

### • 外形尺寸 DIMENSIONS



单位(Unit):mm

型号Part	A	B	C	D	E	F	G
NLPS2D11	3.0±0.2	3.0±0.2	1.1±0.2	3.7±0.3	3.0	3.0	1.0
NLPS2D14	3.0±0.2	3.0±0.2	1.55±0.2	3.7±0.3	3.0	3.0	1.0
NLPS2D18	3.0±0.2	3.0±0.2	1.8±0.2	3.7±0.3	3.0	3.0	1.0
NLPS3D18	3.8±0.2	3.8±0.2	1.8±0.2	4.2±0.3	3.8	3.8	1.2
NLPS3D28	3.8±0.2	3.8±0.2	2.8±0.2	4.2±0.3	3.8	3.8	1.2
NLPS4D18	4.7±0.3	4.7±0.3	1.8±0.2	5.1±0.3	4.7	4.7	1.5
NLPS4D28	4.7±0.3	4.7±0.3	2.8±0.2	5.1±0.3	4.7	4.7	1.5
NLPS5D18	5.7±0.3	5.7±0.3	1.8±0.2	6.1±0.3	5.7	5.7	2.0
NLPS5D28	5.7±0.3	5.7±0.3	2.8±0.2	6.1±0.3	5.7	5.7	2.0
NLPS6D28	6.7±0.3	6.7±0.3	2.8±0.2	7.5±0.3	6.7	6.7	2.0
NLPS6D38	6.7±0.3	6.7±0.3	3.8±0.2	7.5±0.3	6.7	6.7	2.0



单位(Unit):mm

型号 Part	A	B	C	D	E	F
NLPS8D28	8.0±0.3	8.0±0.3	2.8±0.2	6.3	1.2	2.5
NLPS8D38	8.0±0.3	8.0±0.3	3.8±0.2	6.3	1.2	2.5
NLPS8D43	8.0±0.3	8.0±0.3	4.3±0.2	6.3	1.2	2.5

• 电性能参数 ELECTRICAL CHARACTERISTICS

NLPS2D11 Series

型号 Part Number	电感量 L (μH)	公差 Tolerance	测试频率 Test Freq.	直流电阻 DCR(Ω)Max	饱和电路 Isat (A)
NLPS2D11-1R0NT	1.0	±30%	100kHz	0.095	1.10
NLPS2D11-1R5NT	1.5	±30%	100kHz	0.090	1.10
NLPS2D11-2R2NT	2.2	±30%	100kHz	0.066	0.70
NLPS2D11-4R7NT	4.7	±30%	100kHz	0.175	0.70
NLPS2D11-6R8NT	6.8	±30%	100kHz	0.284	0.60
NLPS2D11-100MT	10	±20%	100kHz	0.428	0.48

NLPS2D14 Series

型号 Part Number	电感量 L (μH)	公差 Tolerance	测试频率 Test Freq.	直流电阻 DCR(Ω)Max	饱和电路 Isat (A)
NLPS2D14-1R0NT	1.0	±30%	100kHz	0.056	1.80
NLPS2D14-1R5NT	1.5	±30%	100kHz	0.079	1.55
NLPS2D14-2R2NT	2.2	±30%	100kHz	0.094	1.30
NLPS2D14-2R7NT	2.7	±30%	100kHz	0.125	1.10
NLPS2D14-3R3NT	3.3	±30%	100kHz	0.125	1.00
NLPS2D14-4R7NT	4.7	±30%	100kHz	0.169	0.70
NLPS2D14-5R6NT	5.6	±30%	100kHz	0.175	0.65
NLPS2D14-100MT	10	±20%	100kHz	0.294	0.30
NLPS2D14-470MT	47	±20%	100kHz	1.488	0.30

NLPS2D18 Series

型号 Part Number	电感量 L (μH)	公差 Tolerance	测试频率 Test Freq.	直流电阻 DCR(Ω)Max	饱和电路 Isat (A)
NLPS2D18-2R2NT	2.2	±30%	100kHz	0.066	0.78
NLPS2D18-3R3NT	3.3	±30%	100kHz	0.130	0.65
NLPS2D18-4R7NT	4.7	±30%	100kHz	0.130	0.60
NLPS2D18-100MT	10	±20%	100kHz	0.220	0.43
NLPS2D18-150MT	15	±20%	100kHz	0.240	0.32
NLPS2D18-220MT	22	±20%	100kHz	0.396	0.27
NLPS2D18-330MT	33	±20%	100kHz	0.438	0.22
NLPS2D18-470MT	47	±20%	100kHz	0.500	0.19

Isat: 饱和电流, 加Isat时, 电感量下降≤35%

Isat: Saturation Current, the current when the inductance becomes 35% lower than its initial value.

## NLPS3D18 Series

型号 Part Number	电感量 L (μH)	公差 Tolerance	测试频率 Test Freq.	直流电阻 DCR(Ω)Max	饱和电流 Isat (A)
NLPS3D18-1R0NT	1.0	±30%	100kHz	0.050	2.00
NLPS3D18-1R5NT	1.5	±30%	100kHz	0.055	1.80
NLPS3D18-2R2NT	2.2	±30%	100kHz	0.063	1.30
NLPS3D18-3R3NT	3.3	±30%	100kHz	0.069	1.20
NLPS3D18-4R7NT	4.7	±30%	100kHz	0.107	0.80
NLPS3D18-100MT	10	±20%	100kHz	0.205	0.70
NLPS3D18-220MT	22	±20%	100kHz	0.420	0.65
NLPS3D18-330MT	33	±20%	100kHz	0.760	0.38
NLPS3D18-221MT	220	±20%	100kHz	3.800	0.10

## NLPS4D18 Series

型号 Part Number	电感量 L (μH)	公差 Tolerance	测试频率 Test Freq.	直流电阻 DCR(Ω)Max	饱和电流 Isat (A)
NLPS4D18-1R2NT	1.2	±30%	100kHz	0.045	1.72
NLPS4D18-2R2NT	2.2	±30%	100kHz	0.075	1.32
NLPS4D18-4R7NT	4.7	±30%	100kHz	0.090	0.85
NLPS4D18-6R8NT	6.8	±30%	100kHz	0.160	0.76
NLPS4D18-100MT	10	±20%	100kHz	0.200	0.61
NLPS4D18-120MT	12	±20%	100kHz	0.210	0.56
NLPS4D18-150MT	15	±20%	100kHz	0.240	0.50
NLPS4D18-180MT	18	±20%	100kHz	0.338	0.48
NLPS4D18-220MT	22	±20%	100kHz	0.397	0.41

## NLPS4D28 Series

型号 Part Number	电感量 L (μH)	公差 Tolerance	测试频率 Test Freq.	直流电阻 DCR(Ω)Max	饱和电流 Isat (A)
NLPS4D28-2R2NT	2.2	±30%	100kHz	0.045	2.04
NLPS4D28-4R7NT	4.7	±30%	100kHz	0.072	1.32
NLPS4D28-100MT	10	±20%	100kHz	0.128	1.00
NLPS4D28-200MT	20	±20%	100kHz	0.235	0.70
NLPS4D28-471MT	470	±20%	100kHz	4.400	0.20

## NLPS5D18 Series

型号 Part Number	电感量 L (μH)	公差 Tolerance	测试频率 Test Freq.	直流电阻 DCR(Ω)Max	饱和电流 Isat (A)
NLPS5D18-4R1NT	4.1	±30%	10kHz	0.057	1.95
NLPS5D18-6R8NT	6.8	±30%	10kHz	0.095	1.42
NLPS5D18-220MT	22	±20%	10kHz	0.290	0.80
NLPS5D18-470MT	47	±20%	10kHz	0.595	0.54
NLPS5D18-820MT	82	±20%	10kHz	0.978	0.41

Isat: 饱和电流, 加Isat时, 电感量下降≤35%

Isat: Saturation Current, the current when the inductance becomes 35% lower than its initial value.

## NLPS5D28 Series

型号 Part Number	电感量 L (μH)	公差 Tolerance	测试频率 Test Freq.	直流电阻 DCR(Ω)Max	饱和电流 Isat (A)
NLPS5D28-2R2NT	2.2	±30%	10kHz	0.036	2.10
NLPS5D28-4R7NT	4.7	±30%	10kHz	0.041	1.00
NLPS5D28-6R2NT	6.2	±30%	10kHz	0.045	1.80
NLPS5D28-6R8NT	6.8	±30%	10kHz	0.047	1.75
NLPS5D28-100MT	10	±20%	10kHz	0.067	1.20
NLPS5D28-150MT	15	±20%	10kHz	0.103	1.10
NLPS5D28-220MT	22	±20%	10kHz	0.150	0.90
NLPS5D28-101MT	100	±20%	10kHz	0.520	0.42

## NLPS6D28 Series

型号 Part Number	电感量 L (μH)	公差 Tolerance	测试频率 Test Freq.	直流电阻 DCR(Ω)Max	饱和电流 Isat (A)
NLPS6D28-4R7NT	4.7	±30%	10kHz	0.039	2.50
NLPS6D28-6R8NT	6.8	±30%	10kHz	0.054	2.10
NLPS6D28-8R2NT	8.2	±30%	10kHz	0.060	1.90
NLPS6D28-100MT	10	±20%	10kHz	0.065	1.70
NLPS6D28-180MT	18	±20%	10kHz	0.095	1.32
NLPS6D28-101MT	100	±20%	10kHz	0.535	0.54
NLPS6D28-331MT	330	±20%	10kHz	1.790	0.25

## NLPS6D38 Series

型号 Part Number	电感量 L (μH)	公差 Tolerance	测试频率 Test Freq.	直流电阻 DCR(Ω)Max	饱和电流 Isat (A)
NLPS6D38-1R0NT	1.0	±30%	10kHz	0.016	4.50
NLPS6D38-1R5NT	1.5	±30%	10kHz	0.017	4.20
NLPS6D38-2R2NT	2.2	±30%	10kHz	0.019	4.00
NLPS6D38-3R3NT	3.3	±30%	10kHz	0.020	3.72
NLPS6D38-4R7NT	4.7	±30%	10kHz	0.032	2.80
NLPS6D38-6R8NT	6.8	±30%	10kHz	0.034	2.50
NLPS6D38-7R3NT	7.3	±30%	10kHz	0.039	2.10
NLPS6D38-100MT	10	±20%	10kHz	0.048	2.00
NLPS6D38-120MT	12	±20%	10kHz	0.053	1.70
NLPS6D38-150MT	15	±20%	10kHz	0.057	1.60
NLPS6D38-180MT	18	±20%	10kHz	0.092	1.50
NLPS6D38-220MT	22	±20%	10kHz	0.096	1.30
NLPS6D38-270MT	27	±20%	10kHz	0.109	1.20
NLPS6D38-330MT	33	±20%	10kHz	0.124	1.10
NLPS6D38-390MT	39	±20%	10kHz	0.138	1.00
NLPS6D38-470MT	47	±20%	10kHz	0.155	0.95
NLPS6D38-560MT	56	±20%	10kHz	0.202	0.85
NLPS6D38-680MT	68	±20%	10kHz	0.234	0.75
NLPS6D38-820MT	82	±20%	10kHz	0.324	0.70
NLPS6D38-331MT	330	±20%	10kHz	1.350	0.38

Isat: 饱和电流, 加Isat时, 电感量下降≤35%

Isat: Saturation Current, the current when the inductance becomes 35% lower than its initial value.

## NLPS8D28 Series

型号 Part Number	电感量 L (μH)	公差 Tolerance	测试频率 Test Freq.	直流电阻 DCR(Ω)Max	饱和电流 Isat (A)
NLPS8D28-2R2NT	2.2	±30%	100kHz	0.025	5.00
NLPS8D28-4R7NT	4.7	±30%	100kHz	0.048	3.80
NLPS8D28-330MT	33	±20%	100kHz	0.230	1.40

## NLPS8D38 Series

型号 Part Number	电感量 L (μH)	公差 Tolerance	测试频率 Test Freq.	直流电阻 DCR(Ω)Max	饱和电流 Isat (A)
NLPS8D38-3R3NT	3.3	±30%	100kHz	0.029	5.0
NLPS8D38-4R7NT	4.7	±30%	100kHz	0.029	5.0
NLPS8D38-100MT	10	±20%	100kHz	0.049	3.2
NLPS8D38-220MT	22	±20%	100kHz	0.105	2.3

## NLPS8D43 Series

型号 Part Number	电感量 L (μH)	公差 Tolerance	测试频率 Test Freq.	直流电阻 DCR(Ω)Max	饱和电流 Isat (A)
NLPS8D43-4R7NT	4.7	±30%	100kHz	0.027	4.80
NLPS8D43-150MT	15	±20%	100kHz	0.074	2.90
NLPS8D43-470MT	47	±20%	100kHz	0.175	1.50
NLPS8D43-680MT	68	±20%	100kHz	0.280	1.20
NLPS8D43-101MT	100	±20%	100kHz	0.430	1.00
NLPS8D43-331MT	330	±20%	100kHz	1.060	0.50

Isat: 饱和电流, 加Isat时, 电感量下降≤35%

Isat: Saturation Current, the current when the inductance becomes 35% lower than its initial value.

注: 本规格书仅供参考, 内容若有更改, 恕不另行通知, 以最新版本为准!

Note: This specification is for reference only. Contents are subject to change without notice, the latest version prevails